

INSTALLATION INSTRUCTIONS

Two Bike Platform Mount Carrier for 2" Hitches or RV Bumpers

BC-202BA

Two Bike Platform Mount Carrier for 2" Hitches or RV Bumpers

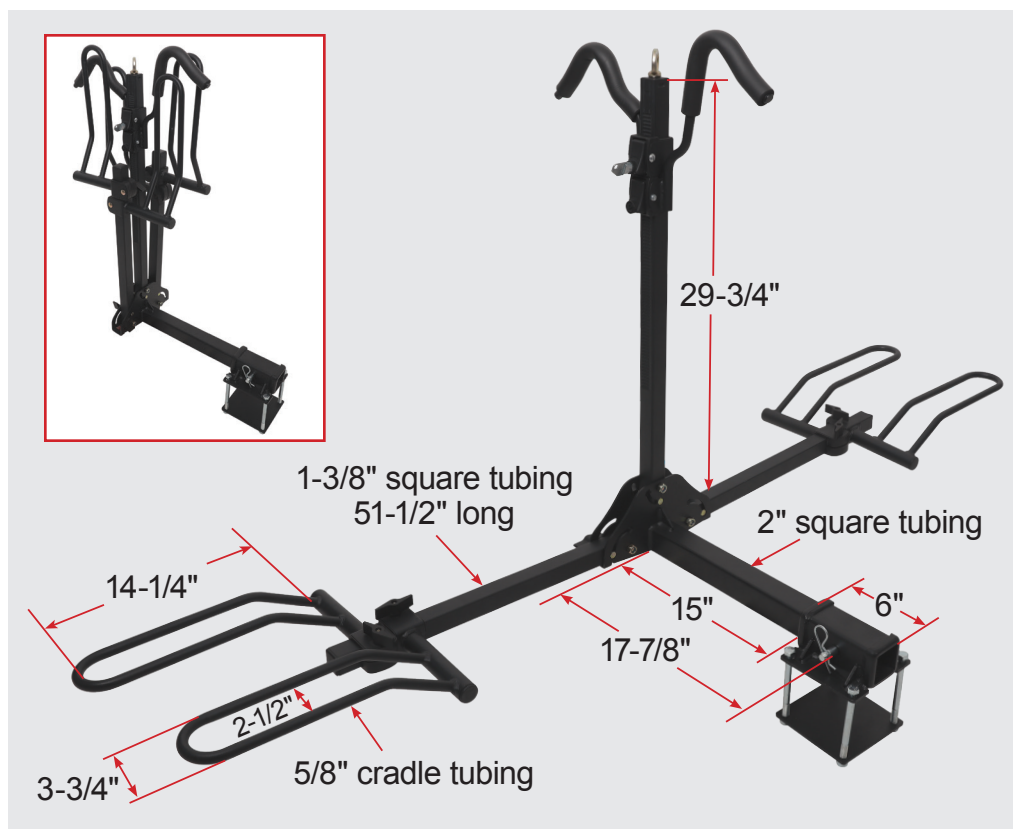
Model: BC-202BA

- Fits 2" receiver
- Bumper accessory hitch included to fit 4" and 4-1/2" square bumpers
- Tilts down for access to vehicle
- Wheel mounts adjust to any size frame
- Tire cradle fits up to 2-1/2" wide tire (BC-2FT Fat Tire Adaptor available)
- Weight capacity 80 lb

Tools Needed

- (1) 17mm Open Wrench
- (1) 19mm Open Wrench

NOT TESTED ON OR APPROVED FOR E-BIKES



Assembly Instructions

STEP 1

Assemble the primary frame by connecting the Support Base Assembly (part #1) and (2) Horizontal Tubes (part #2) using (2) 5/16" knob, (4) 5/16" flat washer, (2) 5/16" spring washer,

(2) 5/16" hexagon bolt, (2) M10 Carriage bolts and (2) M10 Locknuts (parts #3, #4, #5, #6, #22 and #23). (See **Figure 1**)

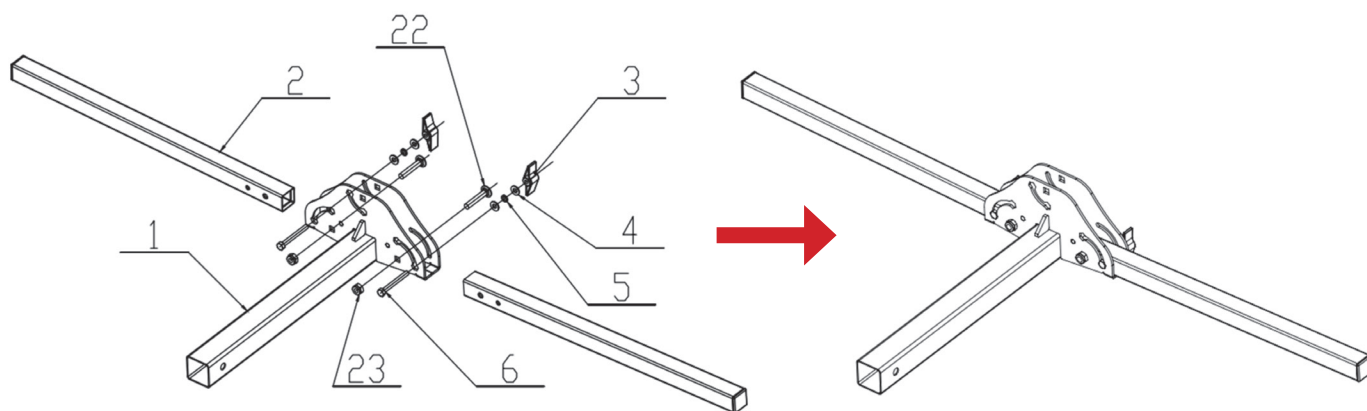


FIGURE 1

INS-BC202BA-C 10.24.2022



**STROMBERG CARLSON
PRODUCTS INC.**

StrombergCarlson.com • 231.947.8600

STEP 2

Attach Folding Shank (part #8) to Support Base Assembly tube, using M16 Bolt, M16 Locknut, 5/8" pin and Clip (parts #9, #12, #10 and #11) for added safety. (See **Figure 3**)

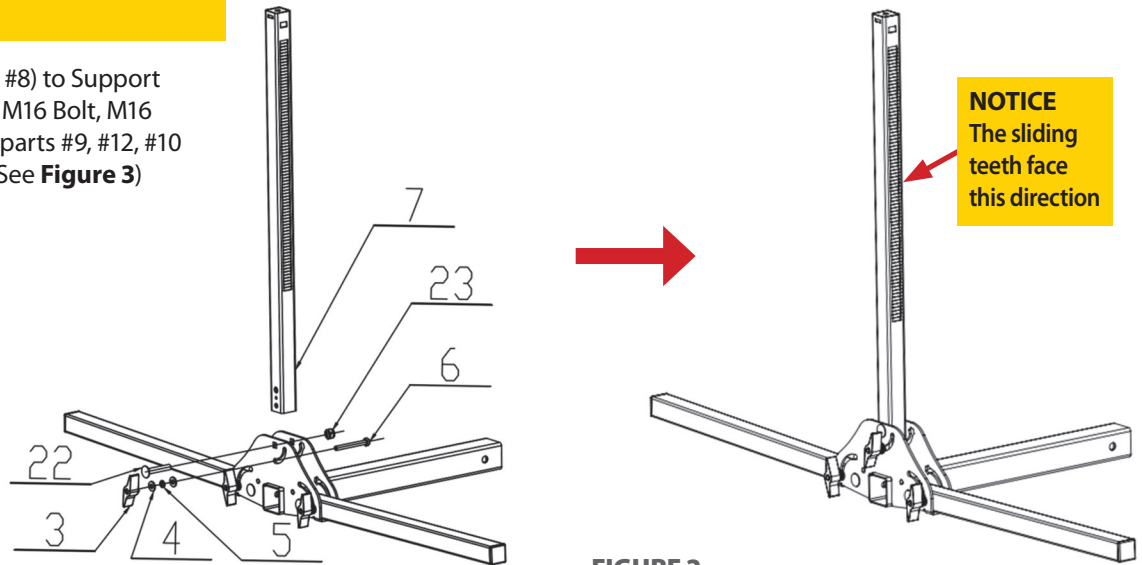


FIGURE 2

STEP 3

Place Vertical Tube (part #7) into the Support Base Assembly by using M10 Carriage Bolt and M10 Locknut (parts #22 and #23). With the Vertical Tube in a vertical position, insert the 5/16" hexagon bolt (part #6), through the 5/16" flat washer (part #4), the 5/16" spring washer (part #5) and the 5/16" flat washer (part #4), tighten with 5/16" knob (part #3). (See **Figure 3**)

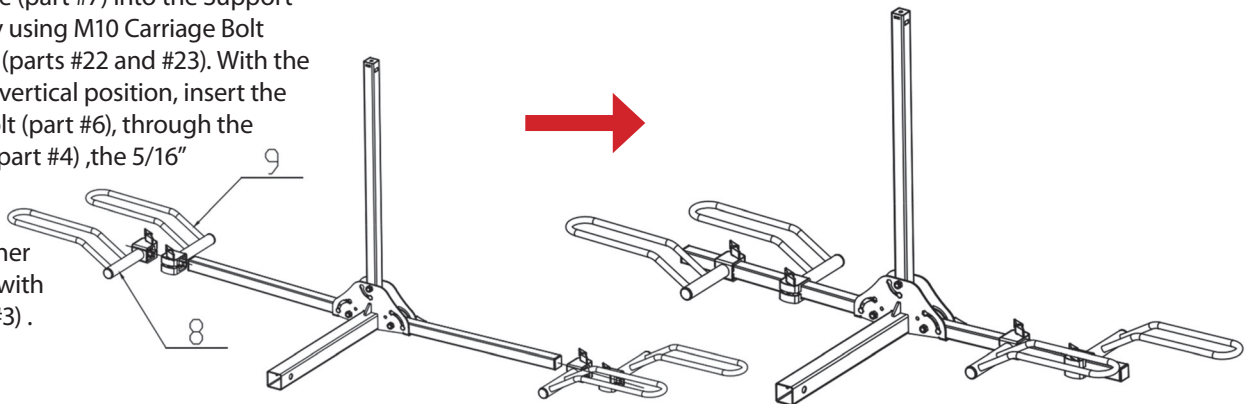


FIGURE 3

STEP 4

Install the Long J-Hook Assembly (part #10) and Short J-Hook Assembly (part #11) onto the Vertical Tube, then tighten the M10 Eyebolt (part #12). Put the Reflector (part #13) in the hole of the square tube. (See **Figure 4**)

NOTE: Eyebolt provided for use with customer provided bike cable and lock, to prevent bicycle loss.

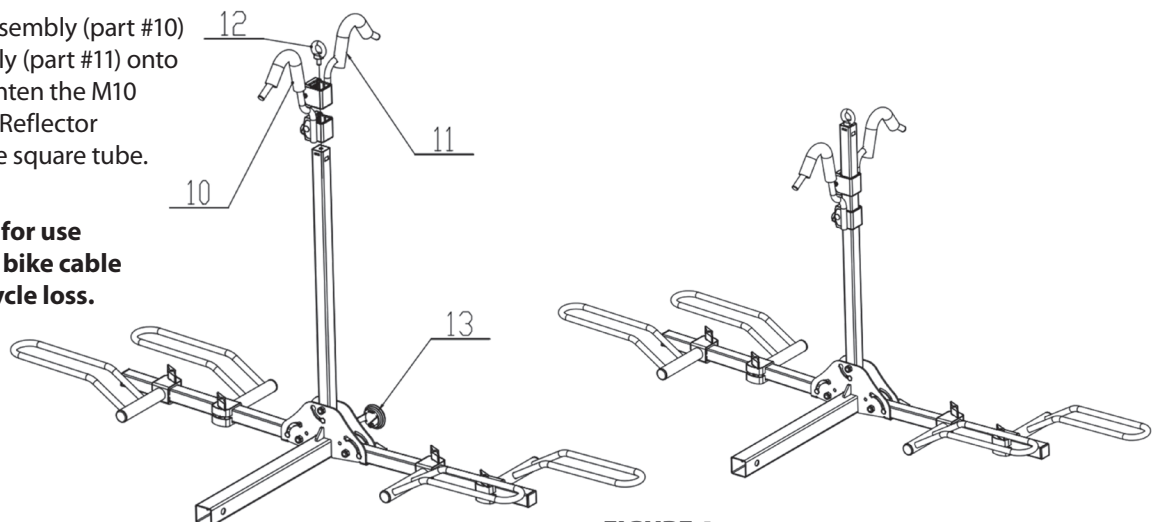


FIGURE 4

RV Bumper Assembly Instructions

If you are mounting the rack onto a 4" - 4.5" RV bumper rather than into your 2" receiver, you will need to use the Bumper Adapter.

It can only be mounted on a continuous steel welded RV bumper. If you are not sure if this is the type of bumper you have please contact your RV dealer.

STEP 5

Position the Bumper Adapter (part #14) on to the top of the 4" - 4.5" square bumper. Position the Plate (part #16) on the underside and attach using (4) M12x140 Hexagon Bolts and (4) M12 Locknuts (parts #15 and #17). Tighten the bolts securely. Insert Support Base Assembly into Bumper Adapter, use (1) Hitch Pin, (1) Clip and (1) M10x20 Hexagon Bolt (parts #18, #19 and #20) to attach. (See **Figure 5**)

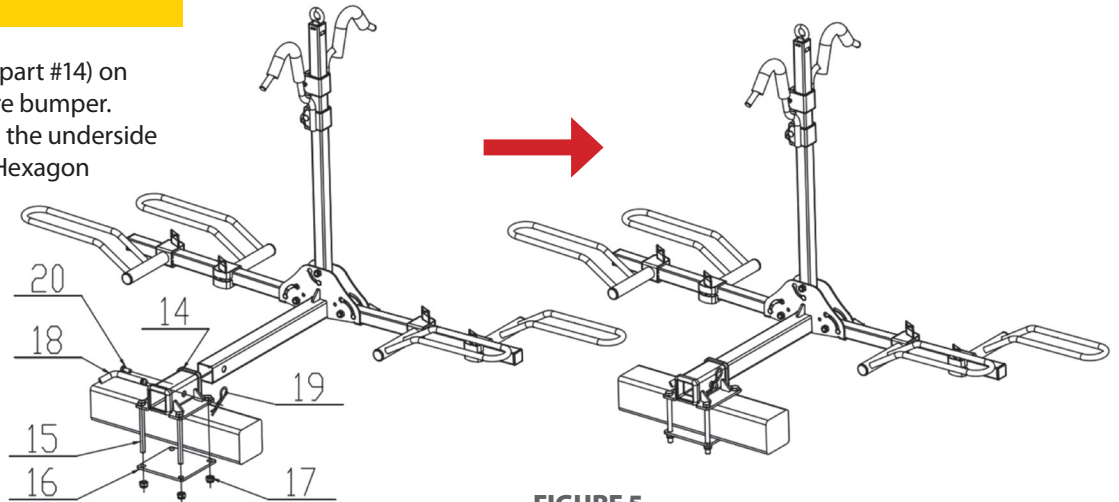


FIGURE 5

Mounting Bikes

The wheel cradles and J-Hooks are completely adjustable and slide on the tubes.

STEP 6

Load inner bicycle first. Loosen the 5/16" knob and expose the head of the 5/16" hexagon bolt outside the support base assembly, then rotate vertical tube down. (See **Figure 6**)

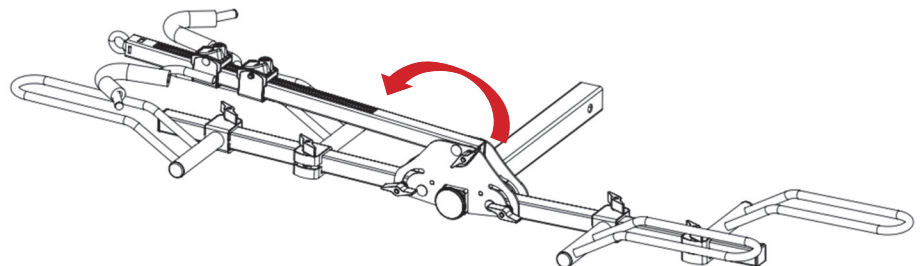


FIGURE 6

STEP 7

Load bicycle into Wheel Cradles. Adjust cradles to appropriate position. Ensure tire is well supported at both ends of Wheel Cradles. Tighten cradles to prevent movement. (See **Figure 7**)

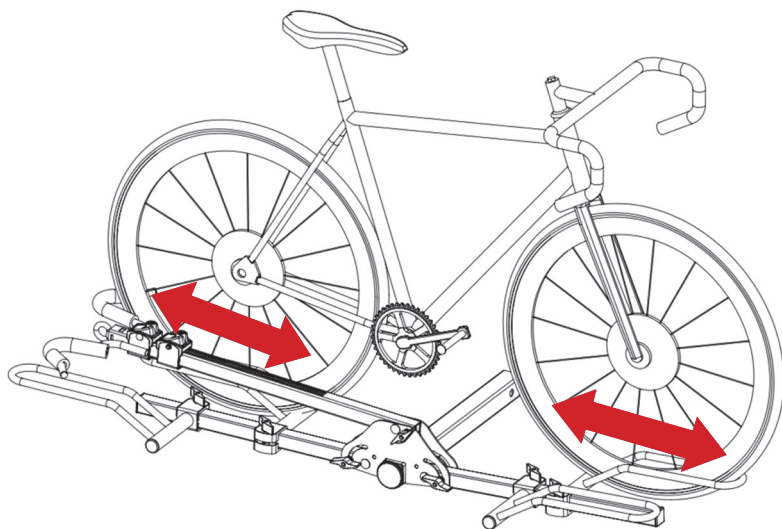


FIGURE 7

STEP 8

Rotate vertical tube to vertical position and lock with the 5/16" knob. Lower J-Hook Assembly down over bicycle frame. (See **Figure 8**)

Apply downward pressure to bicycle and J-Hook Assembly. Tighten J-Hook Assembly and ensure there is no movement of bicycle.

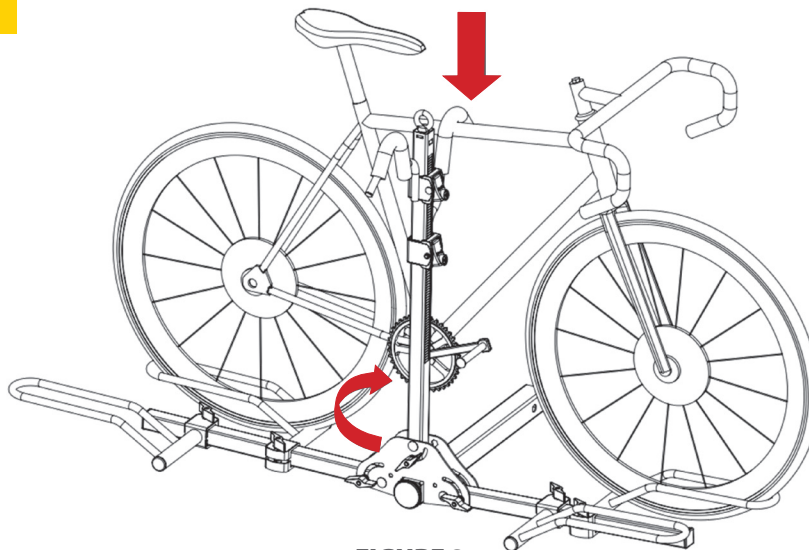
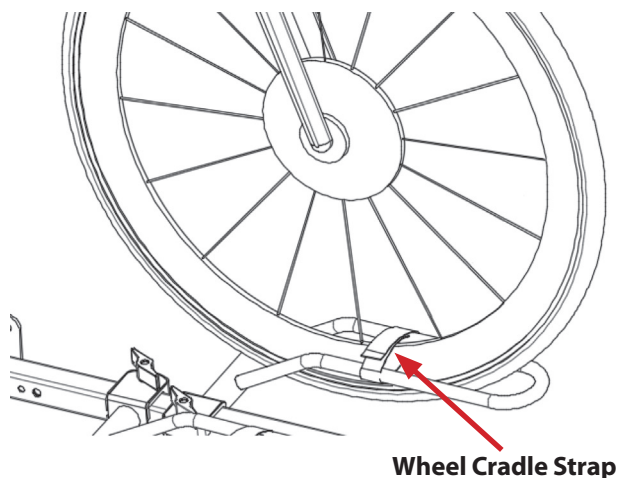


FIGURE 8

STEP 9

Loop (1) Wheel Cradle Strap (part #22) over each wheel and secure. (See **Figure 9**)

WARNING – Failure to use wheel cradle straps may result in bike falling off rack during use.



Wheel Cradle Strap

FIGURE 9

STEP 10

Load second bicycle as described in Bicycle Mounting steps 2 thru 5. Reverse direction of second bicycle to prevent handle bar interference. (See **Figure 10**)

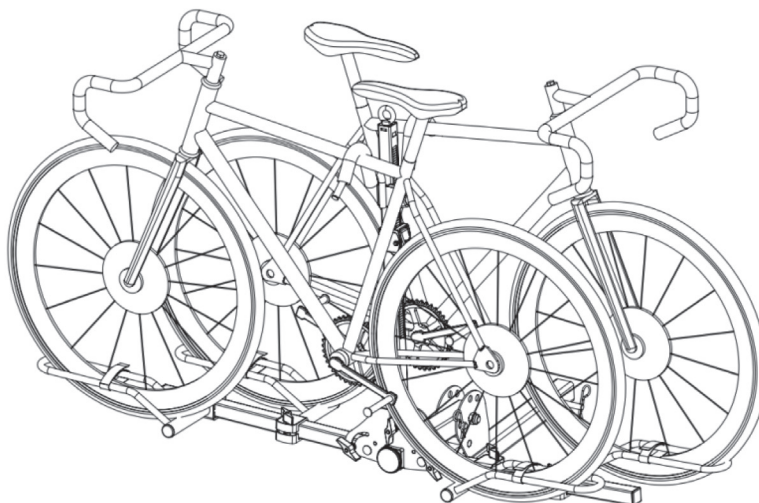


FIGURE 10

STORAGE FEATURE

Loosen the 5/16" knob, rotate the support tube to the vertical states, and then tighten the 5/16" knob. (See **Figure 11**)

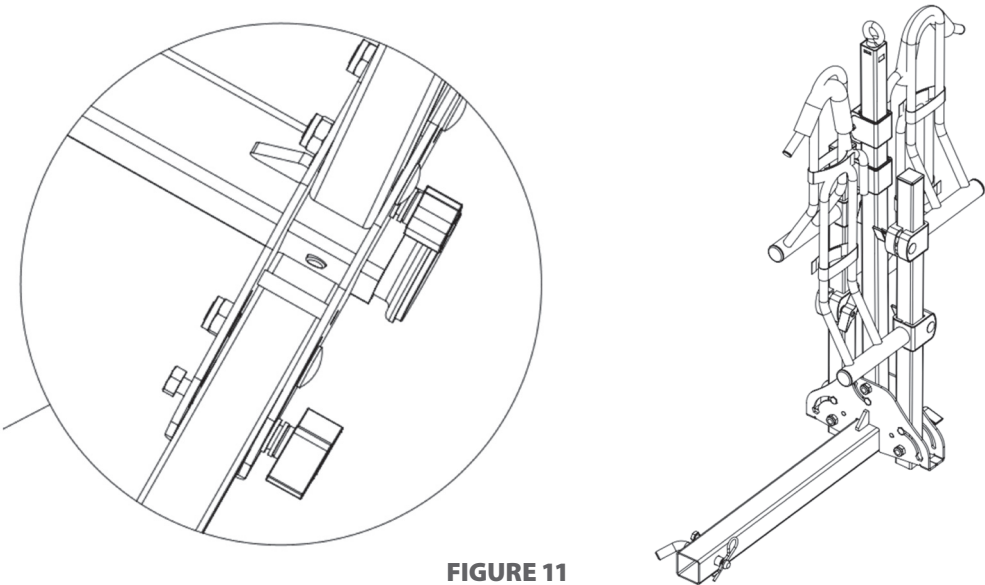
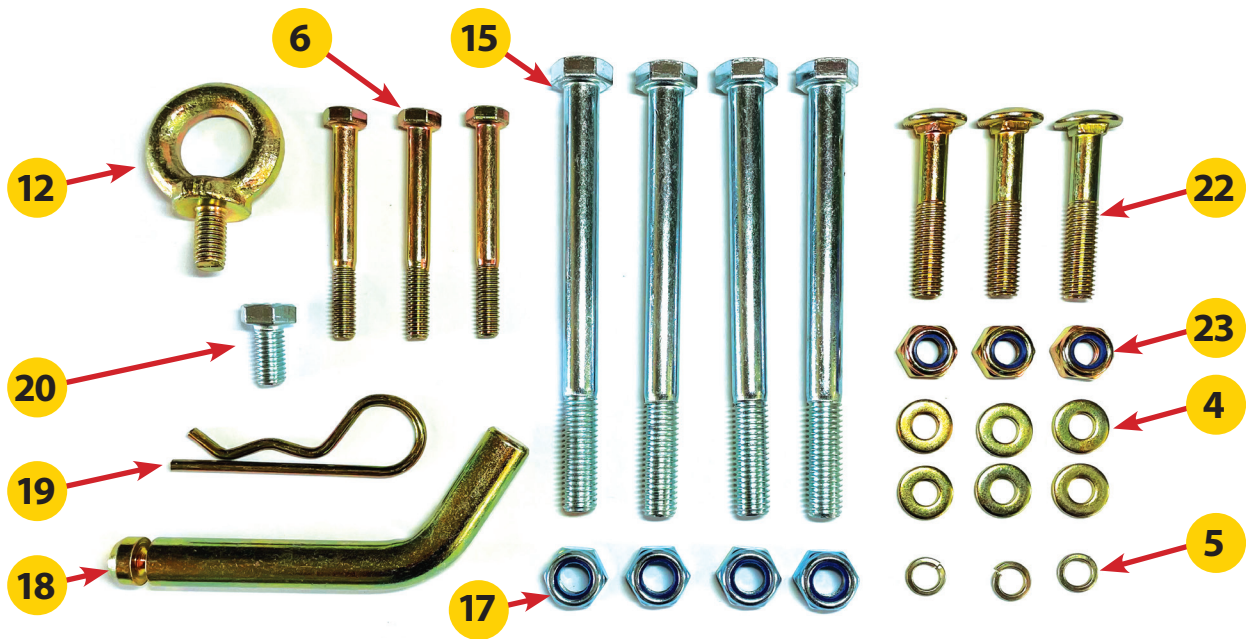


FIGURE 11

HARDWARE KIT

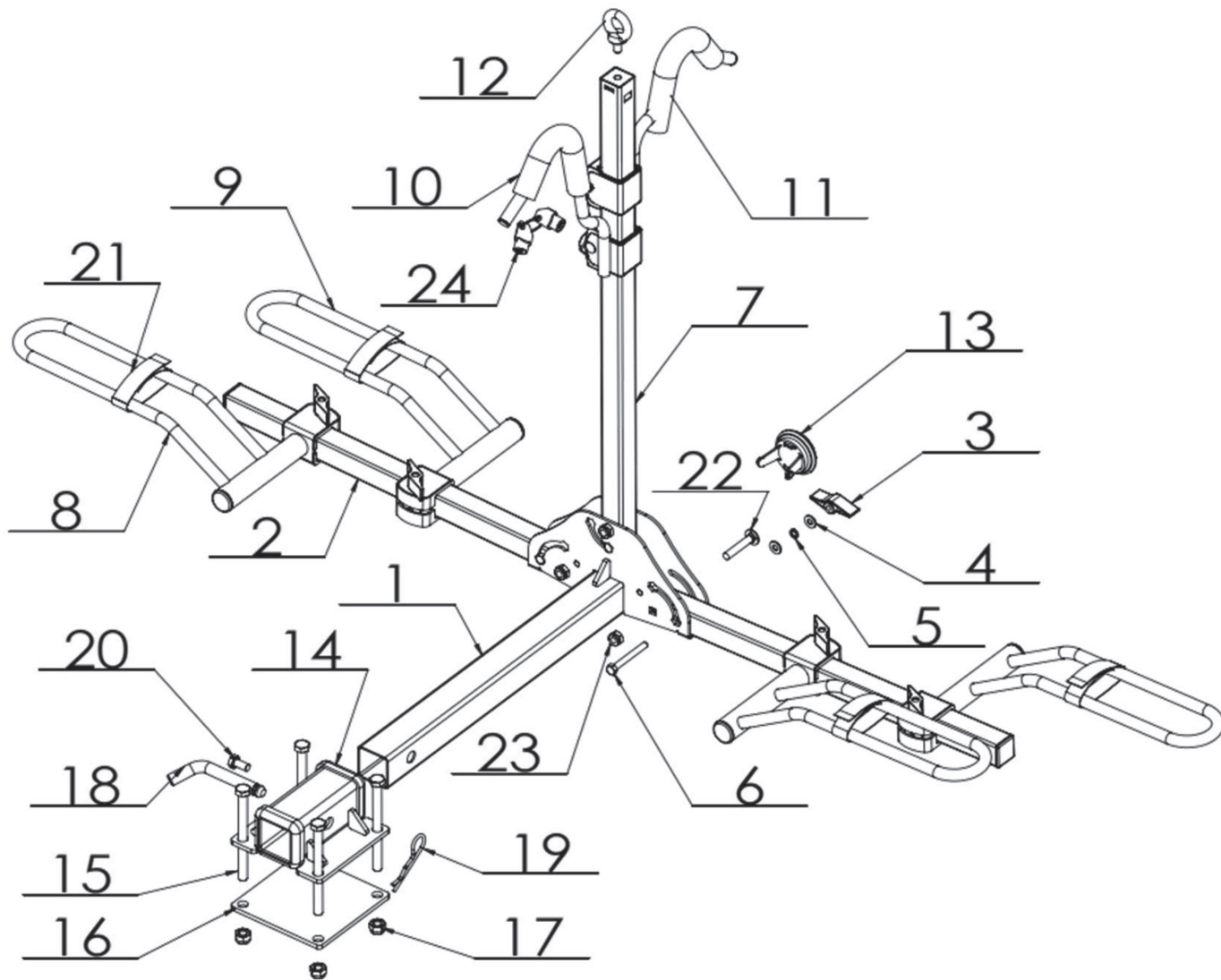


PART #	DESCRIPTION	QTY
1	Support Base Assembly	1
2	Horizontal Tube	2
3	5/16" Knob	3
4	5/16" Flat Washer	6
5	5/16" Spring Washer	3
6	5/16" Hexagon Bolt	3
7	Vertical Tube	1
8	Left Cradle Assembly	2

PART #	DESCRIPTION	QTY
9	Right Cradle Assembly	2
10	Long J-Hook Assembly	1
11	Short J-Hook Assembly	1
12	M10 Eyebolt	1
13	Reflector	1
14	Bumper Adapter	1
15	M12x140 Hexagon Bolt	4
16	Plate	1

PART #	DESCRIPTION	QTY
17	M12 Locknut	4
18	Hitch Pin	1
19	Clip	1
20	M10-20 Hexagon Bolt	1
21	Wheel Cradle Strap	4
22	M10 Carriage Bolt	3
23	M10 Locknut	3
24	Circular Key	1

ASSEMBLY DIAGRAM



PART #	DESCRIPTION	QTY
1	Support Base Assembly	1
2	Horizontal Tube	2
3	5/16" Knob	3
4	5/16" Flat Washer	6
5	5/16" Spring Washer	3
6	5/16" Hexagon Bolt	3
7	Vertical Tube	1
8	Left Cradle Assembly	2
9	Right Cradle Assembly	2
10	Long J-Hook Assembly	1

PART #	DESCRIPTION	QTY
11	Short J-Hook Assembly	1
12	M10 Eyebolt	1
13	Reflector	1
14	Bumper Adapter	1
15	M12x140 Hexagon Bolt	4
16	Plate	1
17	M12 Locknut	4
18	Hitch Pin	1
19	Clip	1
20	M10-20 Hexagon Bolt	1

PART #	DESCRIPTION	QTY
21	Wheel Cradle Strap	4
22	M10 Carriage Bolt	3
23	M10 Locknut	3
24	Circular Key	1



**STROMBERG CARLSON
PRODUCTS INC.**

StrombergCarlson.com • 231.947.8600