

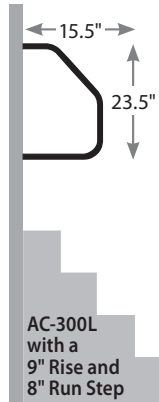
INSTALLATION INSTRUCTIONS

Locking Lend-A-Hand

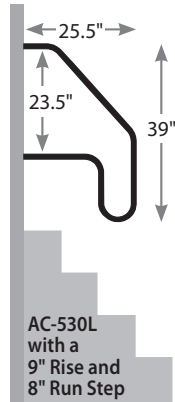
AC-300L, AC-500L, AC-530L, AC-544L



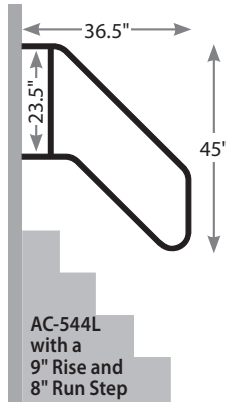
AC-300L



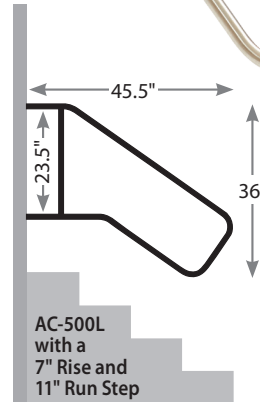
AC-530L



AC-544L



AC-500L



Bauer Products Key Number 357

AM-030L

(backer kit sold separately)



Locking Lend-A-Hand

Models: AC-300L, AC-500L, AC-530L, AC-544L

WARNING: This rail is designed to support up to 200 lb only when properly installed into structural backing.

This rail shipped to you fully assembled. Please pivot the rail brackets and test the lock prior to installing, to guarantee the assembly integrity. This rail will only support its user as well as it is attached to the coach.

The third hole (pictured on the top left corner of the bracket – see **Figure 1**) is for OEM use and is provided to add stability

to the rail. If no door stud is available at the mounting hole locations, you may have to drill through the wall of the coach and use large washers/backer plates for load distribution.

1. Identify all carton contents are present (place screws in a metal pan to prevent part loss).
2. Determine if you are attaching your rail to the door stud, or if you will need to back this installation with washers/plates.
3. Remove bracket cover from each bracket.

INS-2009L-C 06.16.2021

4. Hold rail at your chosen mounting height on the coach, leaving 1/8" clearance around the mounting bracket for the bracket cover. Mark the screw holes and drill 1/8" pilot holes. You may want to put a dab of caulk in each hole before mounting the brackets.
5. Drive 3" Phillips head screws into your coach, attaching through all 3 holes on each bracket. There is no reason to caulk around the bracket.
6. If you are through-bolting, be sure to use appropriate bolts, nuts and washers/plates for your application (not provided).
7. Reinstall the bracket covers, securing on the bottom of each by using the provided 3/8" pan head screws.

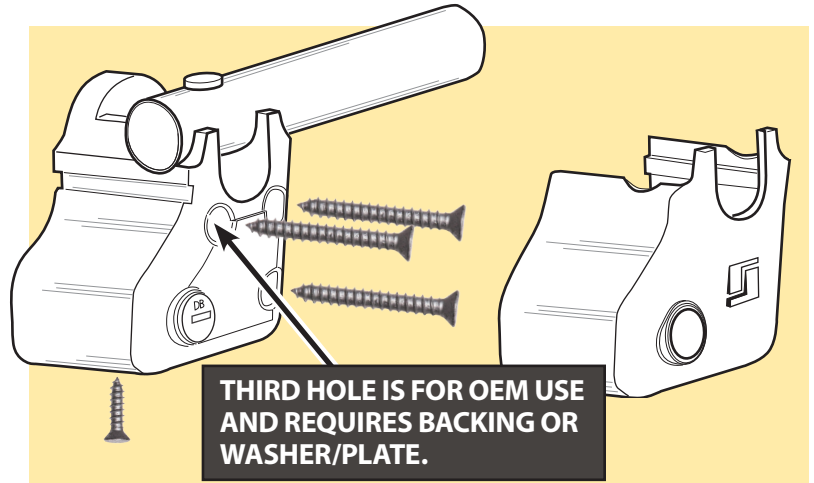


FIGURE 1

NOTE: This rail uses Bauer Products locks. Keys and corresponding brackets are marked with the key number used (357). If you need replacement keys, or would like to re-key this rail to match the other locks on your coach, please contact Bauer Products at: 866.682.2837 or visit <https://bauerproducts.com/?s=keyed+alike>

Contents

- (1) Fully assembled rail with locking brackets
- (2) Keys
- (6) #14 x 3" Phillips head mounting screws
- (2) #8-32 x 3/8" pan head screws for securing mounting bracket covers

STROMBERG

STROMBERG CARLSON

STROMBERG CARLSON
PRODUCTS INC.

STROMBERG **STRONG**

SINCE 1959